



IN LINE CENTRIFUGAL DUCT FANS **TURBO**





IN LINE CENTRIFUGAL DUCT FANS TURBO

Range of centrifugal high performances fans to convey in ducts air or fumes with a maximum temperature of 55°C.

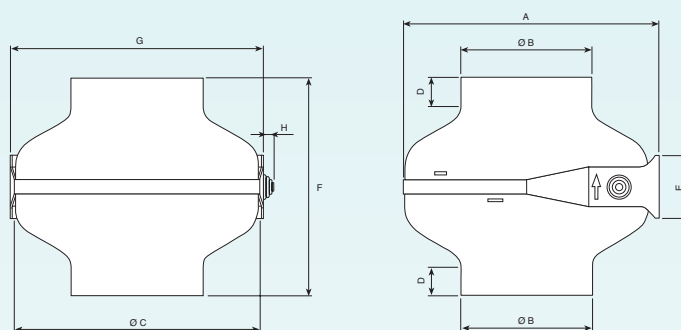
Suitable for applications in domestic, commercial and industrial such as bathrooms, kitchens, offices, factories, shops, bars, gymnasiums, restaurants etc...

- Complete range of inlet and outlet diameters to allow the installations in most standard sizes of commercial ducts.
- The range is composed by 14 models either in standard version with high performances then in ES version that offers a good noise level and a reduction in energy consumption increasing the life of the products.
- All the models mount ball bearing motors with thermoprotector.
- Zinc plated steel body, high resistance motor support with incorporated airflow fins.
- Mounting bracket integrated with the product that allows installation in any position. Holes provided in the bracket allow mounting with cords.
- Installation and electric connection particularly fast and easy.
- Electric boxes with IP54 protection.
- Product protection IPX4.
- Double insulated product, electric grounding is not necessary.
- Motor speed can be regulated with an optional electronic regulator (see page 69).
- In accordance with EN 60335-2-80.

Accessories:

- See page 69.

Dimensions



CE

IPX4



Model	A	ø B	ø C	D	E	F	G	H	Kg
Turbo 100 ES	287	98	275	17	70	242	282	12	3
Turbo 100	287	98	275	17	70	242	282	12	3
Turbo 125 ES	287	123	275	24	70	242	282	12	3
Turbo 125	287	123	275	24	70	242	282	12	3
Turbo 150 ES	287	148	275	32	70	242	282	12	3
Turbo 150	287	148	275	32	70	242	282	12	3
Turbo 160 ES	287	158	275	35	70	242	282	12	3
Turbo 160	354	158	345	24	84	272	345	12	5,5
Turbo 200 ES	354	198	345	34	84	272	345	12	4
Turbo 200	354	198	345	34	84	272	345	12	5,5
Turbo 250	354	248	345	48	84	272	345	12	5,5
Turbo 315 ES	354	313	345	48	84	272	345	12	5,5
Turbo 315	354	313	345	48	84	272	345	12	6

Technical Data

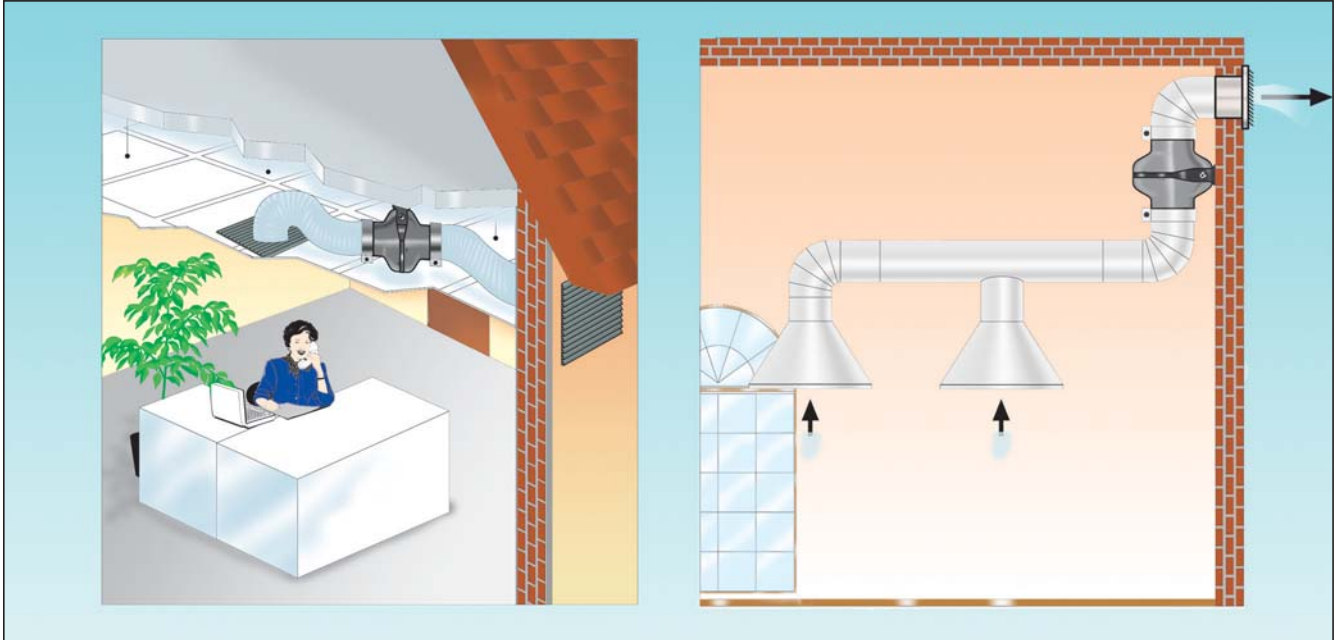
Model	Ref.	Flow rate m ³ /h	Max Press. mm. H ₂ O	W	230 V Hz	dB (A) 3m (*)	Nom. Curr. in A. at 230V	RPM
Turbo 100 ES	OW 371 7	210	30	55	50	45	0.25	2000
Turbo 100	OW 370 9	270	30	75	50	53	0.35	2600
Turbo 125 ES	OW 374 1	290	29	55	50	45	0.25	1850
Turbo 125	OW 373 3	400	29	75	50	52	0.38	2530
Turbo 150 ES	OW 377 4	370	27	55	50	42	0.25	1850
Turbo 150	OW 376 6	500	29	75	50	52	0.38	2530
Turbo 160 ES	OW 378 2	540	28	75	50	52	0.38	2500
Turbo 160	OW 379 0	710	37	90	50/60	56	0.43	2500
Turbo 200 ES	OW 380 8	730	30	90	50/60	56	0.42	2550
Turbo 200	OW 381 6	1050	55	180	50/60	58	0.78	2550
Turbo 250	OW 383 2	1200	56	180	50/60	59	0.78	2590
Turbo 315 ES	OW 385 7	1250	50	180	50/60	59	0.78	2600
Turbo 315	OW 384 0	1400	65	280	50/60	59	1.24	2500

* dB (A) at 3 meters with ducted inlet and outlet.

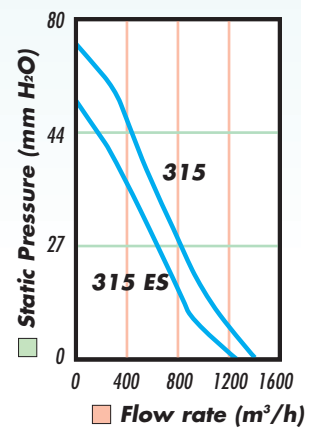
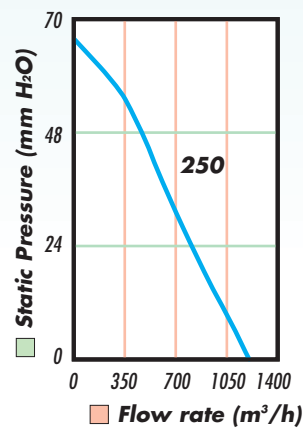
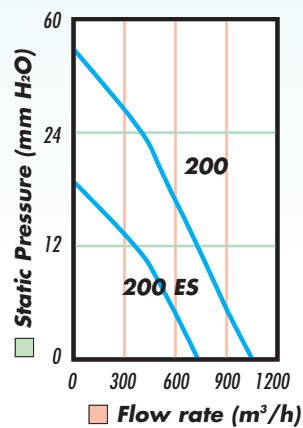
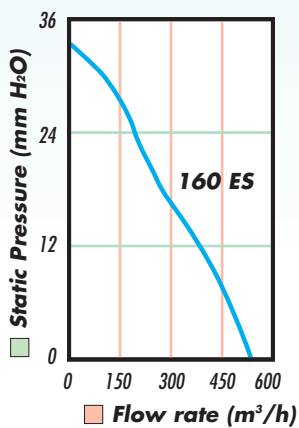
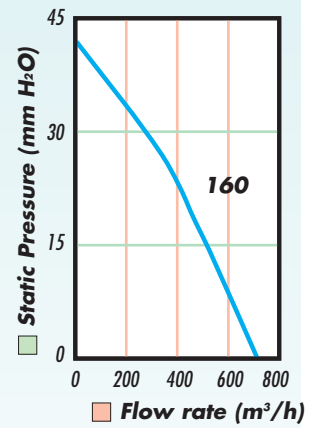
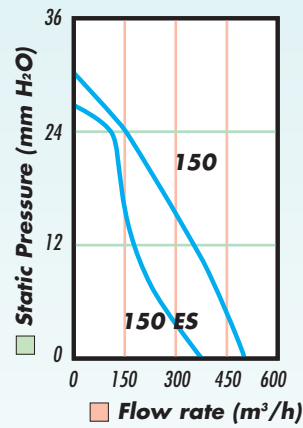
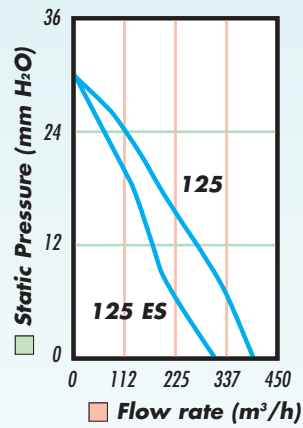
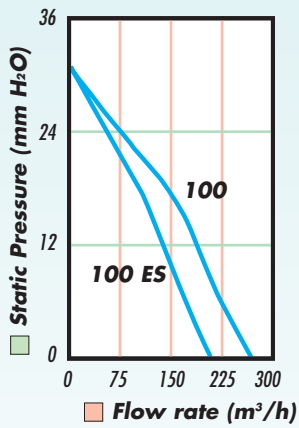


IN LINE CENTRIFUGAL DUCT FANS TURBO

Application / Installation



Aeraulic performances

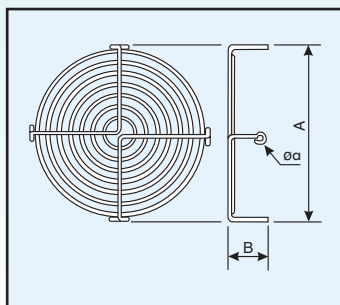
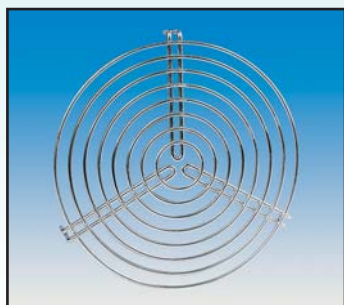




ACCESSORIES - INDUSTRIAL SERIES -

Protection grille

Safety protection grille to protect appliance from any accidental contact. Made of in zinc plated steel. Fixing screws included.

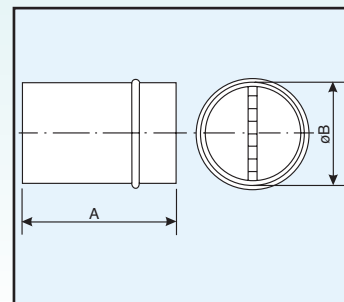


Model	Ref.	ø A	B	ø a
TURBO 100	OW 608 2	100	20	4,5
TURBO 125	OW 609 0	125	20	4,5
AC/TURBO 150	OW 610 8	150	20	4,5
TURBO 160	OW 629 8	160	20	4,5
AC/TURBO 200	OW 611 6	200	20	4,5
TURBO 250	OW 612 4	250	20	4,5
TURBO 315	OW 613 2	315	20	4,5

Backdraught shutter

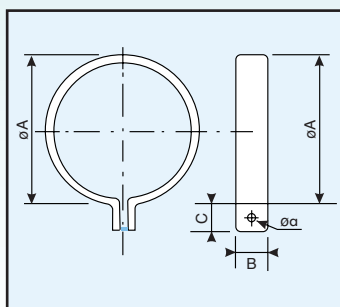
Shutters open automatically with air flow. Zinc plated body. Aluminum shutters.

Model	Ref.	A	ø B
TURBO/TURBO PLAST 100	OW 622 3	77	94
TURBO/TURBO PLAST 125	OW 623 1	90	119
AC/TURBO/TURBO PLAST 150 160	OW 621 5	100	156
AC/TURBO 200	OW 625 6	127	194
TURBO250	OW 626 4	152	244
TURBO 315	OW 627 2	185	309



Duct clamp

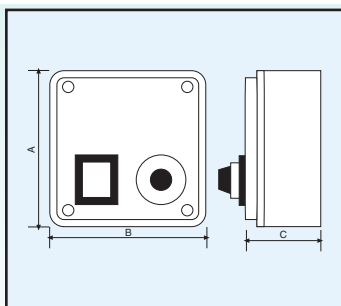
Made of zinc plated steel. Neoprene rubber gasket.



Model	Ref.	ø A	B	C	ø a
TURBO/TURBO PLAST 100	OW 614 0	105	40	20	7
TURBO/TURBO PLAST 125	OW 615 7	130	40	20	7
AC/TURBO//TURBO PLAST 150	OW 616 5	155	40	20	7
TURBO/TURBO PLAST 160	OW 620 7	165	40	20	7
AC/TURBO 200	OW 617 3	205	40	20	7
TURBO 250	OW 618 1	255	40	20	7
TURBO 315	OW 619 9	320	40	20	7

Industrial Regulator RGM 2

This electronic regulator is suitable for industrial environments and in compliance with the Machine Directive. It allows a continuous speed regulator protection IP55.

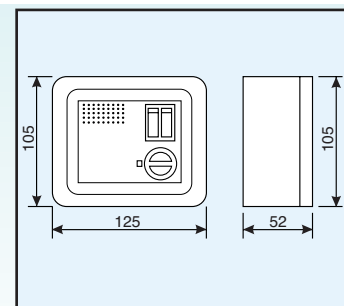


Model	Ref.	A	B	C	Weight Kg	A max
RGM 2	OW 300 6	108	108	100	0,2	1,6 A

Domestic Regulator RG E

This electronic regulator is suitable for domestic environments. It can control single phase fans up to 300W.

It can be recessed through a dedicated accessory COD OW 905 2.



Model	Ref.
RG E	OW 317 0