



IN LINE CENTRIFUGAL DUCT FANS
TURBO PLAST





IN LINE CENTRIFUGAL DUCT FANS TURBO PLAST

New range of centrifugal fans to convey in ducts air with a maximum temperature of 55°C.

- Suitable for domestic, commercial and industrial applications.

- Frame completely made in VO polymeric materials to guarantee the highest level of flame resistance.

- Motor support in high resistance glass filled nylon with air fins incorporated.

Mounting bracket integrated with the product that allows installation in any position.

- Motors on ball bearings with thermoprotector.

- Product protection IPX4.

- Electrical box with IP54 protection.

- Electrical box with incorporated safety grilles both on inlet and outlet openings.

- In case of duct installations it is possible easily remove the grill from the ducted side, increasing then the product performances.

- Double insulated product, electric grounding it is not necessary.

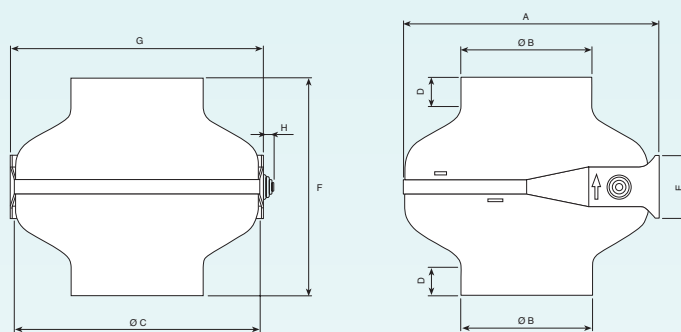
- Motor speed can be regulated with an optional electronic regulator (see page 69).

- In accordance with EN 60335-2-80.

Accessories

- See page 69

Dimensions



CE

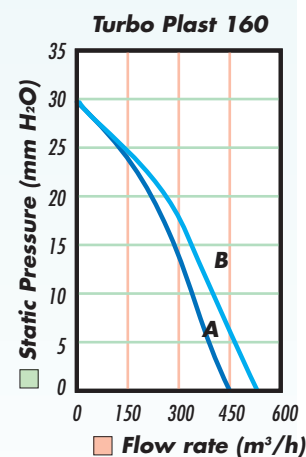
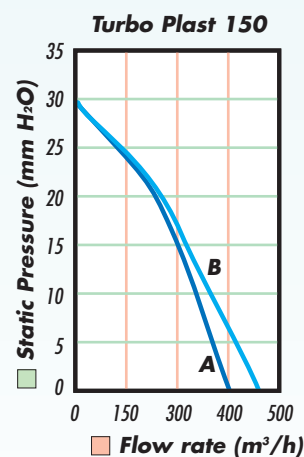
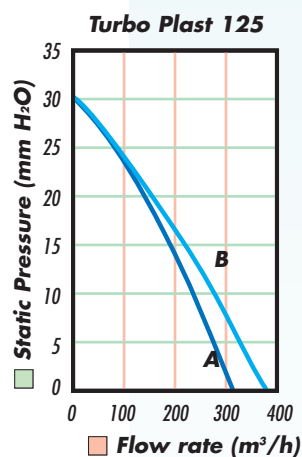
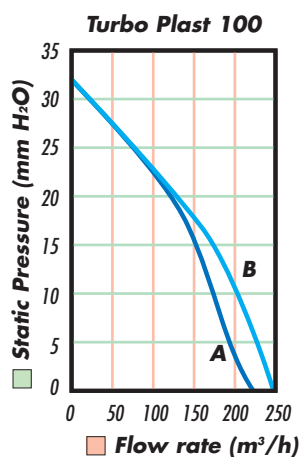
IPX4



Model	A	ø B	ø C	D	E	F	G	H	Kg
Turbo Plast 100	287	98	275	17	70	242	282	12	2,6
Turbo Plast 125	287	123	275	24	70	242	282	12	2,6
Turbo Plast 150	287	148	275	32	70	242	282	12	2,6
Turbo Plast 160	287	158	275	33	70	242	282	12	2,6

A = with two grilles

B = with one grille



Technical Data

Model	Ref.	Flow rate		Max press. mm. H ₂ O	W	230V Hz	dB (A) 3m (*)	Corr. Nom. in Amp. a 230V	RPM
		1 griglia	2 griglie						
Turbo Plast 100	OW 372 5	250	220	31	75	50	48	0.30	2680
Turbo Plast 125	OW 375 8	370	310	30	75	50	48	0.33	2560
Turbo Plast 150	OW 386 5	460	400	29	75	50	49	0.39	2450
Turbo Plast 160	OW 387 3	500	450	29	75	50	50	0.40	2450

* dB (A) at 3 meters with ducted inlet and outlet.